



NEWSLETTER

LAKE SUPERIOR TRANSPORTATION CLUB

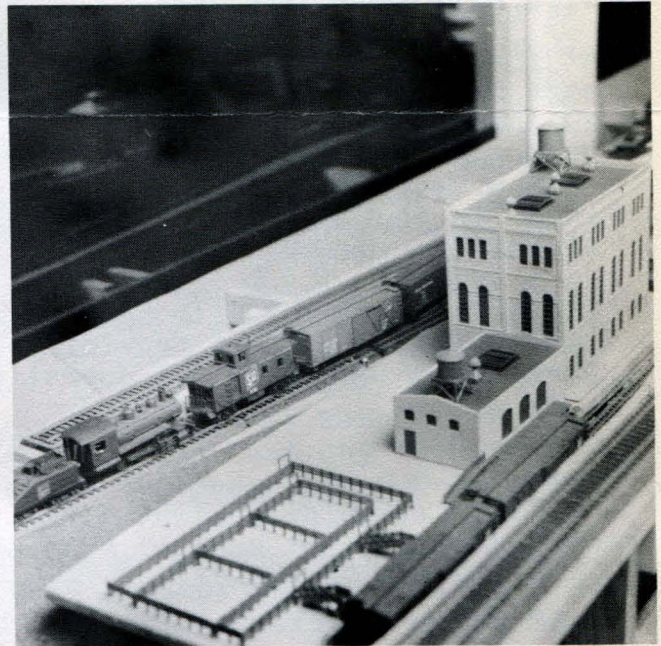
Lake Superior Museum of Transportation and Industry

506 WEST MICHIGAN STREET • DULUTH, MINNESOTA 55802

SPRING-1977



Jim Long, Dale Carlson and Les Seter check the prints.



Slaughterhouse and set designed and built by John Smith.

The model railroad project at the Transportation Museum has been under way for about a year since the lay-out plans were revised. It will be fully operational by Grand Opening time. This is due in large part by the continuing fine leadership of Jim Long and Charlie Summers. New enthusiasm was generated when the new track plan, designed by Ed Knych, was chosen. Work began in earnest to salvage much of what had been done, and begin the new construction.

Physically, the railroad measures 38' by 15', the dimension of the depot building in which it is located. There are nearly 500 feet of track and over 50 track switches, all operated from three control panels.

The track plan itself is quite simple. Two loops that follow the perimeter of the building, connecting tracks, sidings, yards and spurs, will provide operating interest. Scenic back-drops will invite the viewer to walk around three sides of the building to see the entire railroad. The model railroad, again through use of back-drops, will be divided into five dioramas, each one depicting a different railroad scene. Included, are a yard and terminal, an underground ore mine and stockpile area, a small

cont'd on Page 2,

town and rural scenes, a wilderness area and an ore dock. Future issues of the newsletter will feature these dioramas as they near completion.

Since the model railroad will be operated for the public during museum hours, great care has been taken to assure smooth operation through sound trackwork and electrical design. Lambert track has been used on all main line and ninety percent of non-main line track. All track joints are jumpered for electrical continuity, and an extensive network of relays and indicator lights will minimize problems for the operator. 18,000 feet of wire will have been used.

At the present time over 200 freight cars and twenty passenger cars have been constructed by the members. In addition nearly 20 locomotives have been built and custom painted for local prototype railroads. 75 ore cars, each bearing a different number, will serve the ore mine and dock. They have been arranged in mini-quad sets for better operation and maintenance, similar to the DMIR RR.

The model railroad will be a major attraction at the Transportation Museum, and is providing club members with many hours of pleasure in building and operating.

Contributed by Dave Carlson, Pres.

IMPORTANT MEETING NOTICE

The next regular meeting of the Transportation Club will be held in the Multi-Media room, at 7:30 P.M. Friday, March 25, 1977. The entertainment will be furnished by your editor, John Blamey. On the silver screen you will see, GET THIS!, movies of the magnificent Burlington 5632 with an Illini rail-fan trip out of Chicago going West, a segment of a 1916 railroad serial titled, "Leap from the Water tower", autumn and winter railroading at North Freedom on the Mid-Continent Railroad, narrated by Chuck Wiesner. AND MORE! MUCH MORE! Popcorn! Balloons for the Kiddies! And a set of DISHES will be given away!

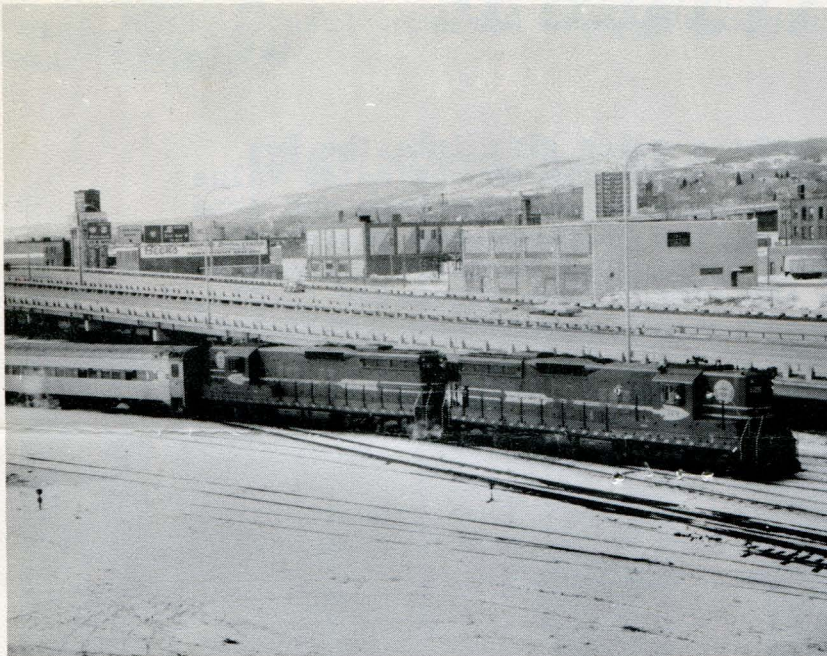
DUES ARE DUE!

1977 membership dues are payable! Those members who have not renewed by March 31st. will be removed from the mailing list and lose all other membership privileges! Please don't have your name omitted. A new membership list is now in preparation. The dues schedule is as follows: Voting \$8.00 per year; Associate \$5.00 per year; Junior \$3.00 per year. Send your check, NOW, payable to Lake Superior Transportation Club, attention: Treasurer, 506 West Michigan St. Duluth, Mn 55802.

NEWS ITEM

Heritage President, Kay Slack, announced preliminary plans for a Grand Opening for the entire Heritage Center complex to co-incide with the completion of the Performing Arts building adjacent to the Depot. The Date: May 5th. through May 8 with special entertainment and programs. Details to be announced.

AMTRAK COMES TO DULUTH



Amtrak dedicated it's new luth depot, Tuesday, Feb. with the arrival of the first train from Minneapolis. It was fitting that the train arrived with two DMIR locomotives, #129 and #130 on point. Although this had not been planned. Due to Amtrak's woes and problems during the winter, they have been seriously short of equipment and had to turn to the DMIR RR. for power for the "Arrowhead". The revised schedule has been a success with ridership increased ten fold. The train now leaves Minneapolis at 8 A.M. daily arrives in Duluth at 11:20. Leaves Duluth at 5:30 P.M. arrives in Minneapolis, 8:00. The first Saturday of the schedule saw over 350 passengers arrive aboard a record seven car train.

All photos by Blamey's Studio.

95 members of the North Star chapter, NRHS, made an excursion that day to visit the Museum. A special film-slide program was presented for the group by Wayne Olsen and Jim Goulding. This new schedule will be an opportunity for many Twin City members to take the train to Duluth for the day and contribute some time to one of our projects.

News Item

The Annual Club Meeting was held on a bitterly cold January 28th. Attendance suffered and a quorum was not reached until a few latecomers arrived. The election results were as follows: Vice President, Administrative, Jergen Fuhr; Treasurer, Robert Cibuzar; Director, Restoration, Tom Gannon; Director, Exhibits & Displays, Ted Appelquest; Director Operations and Safety, Jim Goulding.

Mark Olson, Jergen Fuhr, Dale Carlson showed slides of transportation, club activities, etc. A film by Dick Anthony of KBJR of the BiCentennial Friendship Train was also shown.

News Item

Phil Larson, Manager of the D.W.P.R.R. and an active member of Transportation club and a member of the Museum Board of Directors has recently been transferred to the position of Manager of the Central Vermont Ry. He will reside in St. Albans, Vermont. He was responsible for the great success of the BiCentennial Friendship train to Fort Frances last August. He was also active in a large part for the restoration and donation to the Museum of an attractive D.W.&P caboose, the donation by the Canadian National of C.N. coach 5375, the restoration of the N.P. wrecker #38 and many small exhibit items.

con't on Page 4,

Surely, the Museum will miss a good friend, but all members join in wishing Phil the Best of Luck in his new position.

Contributed by Dave Carlson, Pres.

News Item

The Burlington Northern Inc. brought a major gift into the Depot, Friday, Feb. 25th. Two acres of land with an estimated value of \$80,000 were donated to the St. Louis County Heritage and Arts Center by the railroad. The deed to the property was presented by Mr. Thomas Lamphier, President, Burlington Northern Transportation Division. Accepting for the Center were Sylvester Laskin, Board chairman and Kay Slack, the Center's president. Laskin expressed appreciation to Lamphier for the gift and other past contributions and cooperation by the railroad. Burlington Northern has given historic railroad equipment and recently also gave \$30,000 to the Center's capital fund drive. The land donated Friday lies to the west of the railroad and runs about 1,000 feet, it includes all tracks that serve the Museum. Tom Lamphier said, "Duluth is an important city to the Burlington Northern and as a citizen of this area we ought to participate."

SPECIAL

Dennis Dunne, President, First National Bank announced that a special limited edition of a bronze Duluth Union Depot belt buckle is available for \$15.00 plus \$1.00 postage from the bank. Each souvenir belt buckle has a registration number. The proceeds from the sale of the buckles will go to the Heritage and Arts Center. The buckle is available by sending your name and address with remittance to: Mr. R.M. Sederberg, First National Bank, 3rd. Ave. West and Superior St. Duluth, Minn., 55802. The belt buckle will also be available from the Depot Sales Shop.

A young family were traveling by train for the first time. Eventually, Mother got sleepy and dozed off. She was excitedly awakened by one of her little sons. Annoyed, she said, "Jimmy, you know Mother told you never to wake her. What do you want?" "Well, Mother," he asked, "do you know the name of that last town we stopped at?" "Heavens, no", she cried. "Well, I wish you did",

said Jimmy,
"Billy got
off there!"
From:
Lake Superior Transportation Club.
The Depot.
Duluth, Minn., 55802

FIRST CLASS

