



# NEWSLETTER

## LAKE SUPERIOR TRANSPORTATION CLUB

Lake Superior Museum of Transportation and Industry

506 WEST MICHIGAN STREET • DULUTH, MINNESOTA 55802

SUMMER 1977

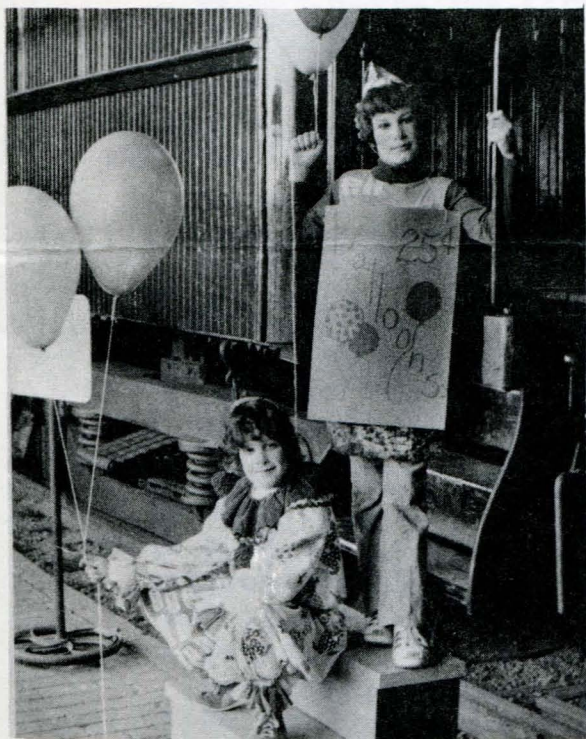


Photo by Bernadine Rolfe  
Other photos by Blamey's Studio.

With colorful bunting and huge, attractive banners, the Great Hall of the Depot was ready to welcome guests for the official Grand Opening of the Depot complex, May, 5th. to 8th. The Lake Superior Transportation Museum was sparkling, with clean windows and platforms. Special displays of old photographs of interest for the visitors were on view.

The new Theater of the Performing Arts was also opened for the first time this weekend, with special performances by the Duluth Ballet group and singer Michael Riley. The auditorium was packed for both performances with Standing Room Only.

According to Shirley Swain, Executive Director, "Shoulder to shoulder people jammed the Depot on the final Sunday."

A Mother's Day Sunday Brunch was served to over 300 people on the track level. The food was prepared by the Duluth Vo-Tech school. The Mike Meyer Duo, perched high atop the tender of the locomotive, William Crooks provided the entertainment.



PAGE 2

FROM DAVE CARLSON, THE PRESIDENT'S DESK

The next general membership meeting is scheduled for 7:30 P.M. Thursday, June 30th. in the Multi-Media room, at the Depot.

Plans for summer activities and possible fan trips will be discussed. Also, at this time, committees must be formed for the annual model railroad show, scheduled for September, two months earlier this year than usual. A film or slide show will be presented and refreshments will be served.

Tuesday evenings no longer are scheduled work nights for the model railroad group. Wednesday evenings and Saturdays continue as regular work periods at the train museum.

A substantial number of copies of the NMRA Bulletins are missing from the Club's collection. Would any member who has borrowed them, please return them to the Museum?

At this time, there are no definite plans for excursion trains this summer. Increased insurance requirements and other costs are making such trips difficult to plan.

We are working on several possibilities and hope to have more to announce at the June 30th. meeting. If any trips can become confirmed, members will be notified by mail.

#### NEWS NOTES

We would like to compliment our club member John Schramek, who was honored as the Senior Achiever of the Year, recently, with the Junior Achievement program. John's company produced framed pictures of the windjammer, "Christian Radich" as it's product. Sponsor of the group was the Duluth, Missabe and Iron Range Ry.

#### NEW PROGRAM TO START

A new program involving young people ages 10-19, will start this summer. This program, referred to as the Junior Transportation Club, will help interested young people understand how the real railroads work and how to build a model railroad.

The group has acquired the D.W.&P. bunk car 70037 for use as a meeting place. A model railroad will be built into one end of the car. The members who started the program are: Dave Bruns, and John Schramek. The ones involved in cleaning and getting the car ready are Tim and Randy Schandel, Bob Pillsbury, Jim Carpenter, John Vincent and Dave Fuhr.

Contributed by Dave Bruns





Photo by Blamey's Studio

#### A NEW MANAGER- AND A NEW LOGO

For the Duluth, Winnipeg and Pacific Railway, that is.

We would like to welcome to our city, and our Transportation Club, Mr. Jerry Corcoran and his family.

Mr. Corcoran has a substantial, seventeen year background in transportation. Starting with the Elgin, Joliet and Eastern R.R. in 1960, he majored in transportation at the John Carroll University. Then spent over three years with the New York Central, where he was a third generation employee. His father and two brothers were also New York Central employees.

Mr. Corcoran then spent 3 $\frac{1}{2}$  years with the Chesapeake and Ohio R.R. and six years with the Grand Trunk.

His employment has covered, Operations, Finance and Freight Claims.

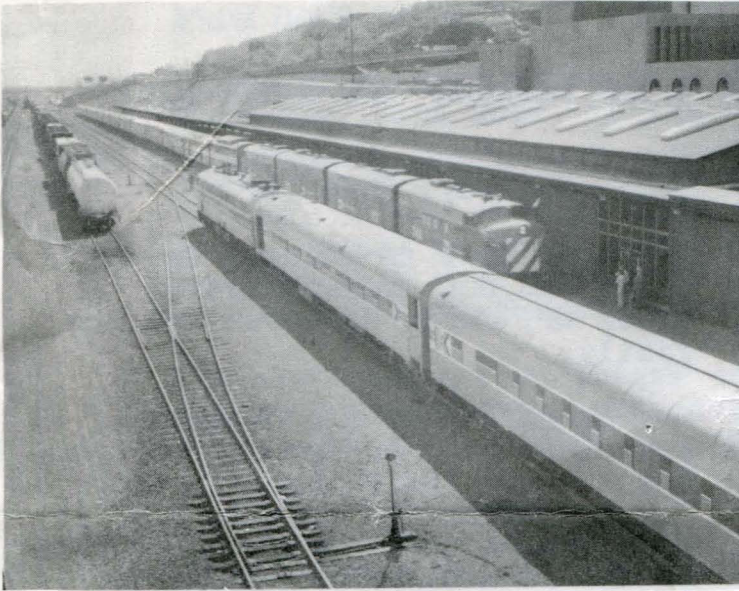
The new logo for the D.W.& P. Ry. Co. states, "Delivered With Pride" using the first letter of each word of the rail line. It is a logo that we will see more of and should make a very fitting by-line for this busy railroad.

#### ABOUT THOSE SAFETY RULES

In 1975, Phil Larson, then General Manager of the D.W.&P. Ry, was urged to form a set of safety rules for the guidance of the Lake Superior Transportation club members. Basing the rules he established, on standard railroad operating rules, Phil came up with an excellent, but simple set of rules. Ironically, some members who requested the safety rules, seem to be the most flagrant violators. Rule A states: "An operating crew shall consist of four men-an engineer and assistant, plus two switchmen." Rule B-- "Crews will stop locomotive before entering or leaving building and will be flagged through doors." And Paragraph 2 states, "When cars are pushed by an engine, a member of the crew must be on the leading car and in a position from which signals necessary to the movement can properly be given."

We realize there is a boyish fascination in "playing trains", however the rules, we suppose, were intended for all to abide with. By and large the Club members have established an enviable safety record. Abiding by the rules will further insure our record. To paraphrase an old roadside, "Burma Shave" sign. "Now, listen, birds, this stuff cost money. So switch awhile but don't get funny".





Photos by Blamey's Studio

The afternoon of May 12th., at promptly 4 P.M., an impressive passenger train consisting of fourteen Burlington Northern Ry. business cars with four shiny F-7 locomotives on the point, arrived at the Duluth Depot. The train carried the Board of Directors of the Burlington Northern Ry. After touring the Transportation Museum, they were host to a number of Duluth business and civic leaders, to a dinner in the Depot Great Hall. The tables were covered with green table cloths and white service-ware. This carried out the Burlington Northern colors. Each setting had a name place card with a small picture of the William Crooks. As a center piece for each table, a four-sided cube of four old photographs were placed with a floral arrangement in the center of each cube.

The following morning the group toured the taconite facility at Allouez and the new coal loading site in Superior.

FROM:  
Lake Superior Transportation Club  
The Depot  
Duluth, Minn., 55802

