

NEWSLETTER

SEPTEMBER, 1978

LAKE SUPERIOR TRANSPORTATION CLUB

Lake Superior Museum of Transportation and Industry

506 WEST MICHIGAN STREET • DULUTH, MINNESOTA 55802



COMING MUSEUM ATTRACTION - "OLD TOWN" TROLLEY

Imagine! Riding on a real vintage trolley car at the Transportation Museum! The car, Lisbon, Portugal Tram No. 531, was recently released for purchase by the Museum from an order of nine cars destined for delivery to Aspen, Colorado this fall. If all goes well, we expect to unload Tram 531 from an ocean vessel at the Duluth Port Terminal during October.

The car will be run on Museum Track No. 7, which will front the "Old Town" project to be constructed along the south (brick) wall of the Depot. Plans call for stringing overhead trolley wire within the Museum and also outside over Track No. 7 to the western extremity of our property.

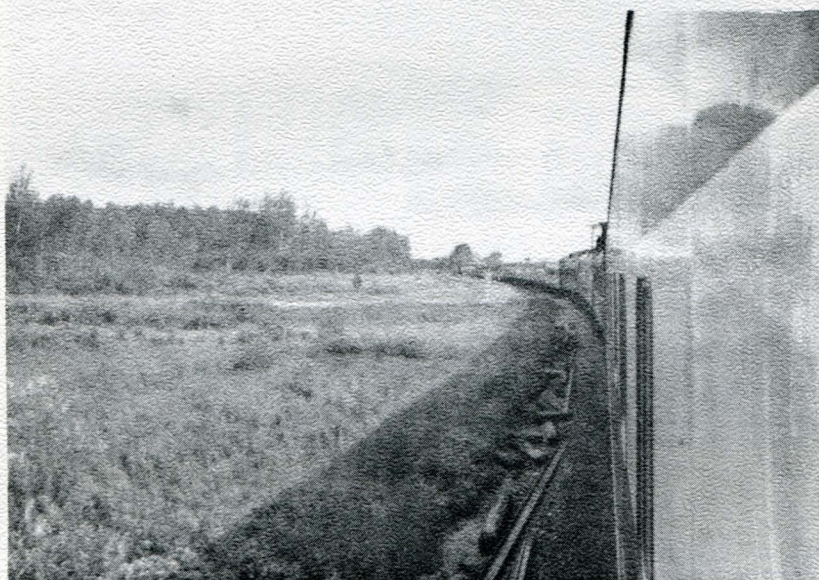
Continued on Page 2

COMING MUSEUM ATTRACTION (continued)

Tram 531 is identical to eight recently acquired by Detroit for use on their new downtown "Detroit Citizen's Railway." She was built in Lisbon during 1926 to Brill 1902 specifications and is an authentic American design in all respects. The car, of traditional deck-roofed pattern, is mounted on a Brill four-wheel truck and has seats for 24 passengers. Her vital statistics: Length - 28' 10"; Width - 7' 9"; Height - 11' 2"; and Weight - 22,000 pounds. Interestingly, No. 531 is very similar to the little four-wheelers operated by the Duluth Street Railway during the 1890's.

Lisbon, which started out with a standard-gauge horsecar line prior to 1900, later decided to electrify with a different and unusual gauge of 90 cm. (approximately 2 feet, 11½ inches). It seems that this gauge was being used by two German-built cable lines, parts of which were incorporated into the new trolley system during 1897. Happily, even though Lisbon operates an extensive bus system, her remaining little trolleys are now assured a permanent role in that community's transit future.

Text by Frank King

RAILS TO THE RANGE TRIP SUCCESSFUL

On Saturday, August 24, you could sense something in the air. It showed on the faces of the people. It showed on the train, from the freshly painted engines all the way to the last car. This was to be the best trip the L.S.T.M. has ever had, and it was. The train ride was excellent and the tours were icing on the cake. The train crew deserves special recognition for their fine job. Thanks should also go to the volunteers from the L.S.T.M. for their efforts.

BIG THINGS HAPPEN TO AMTRAK

It's common knowledge that things don't change rapidly, but when they do, it all comes at once.

The Duluth depot is no exception. Not much happened for the longest time except for the rumor that the passenger rails to the Twin Cities

Continued on Page 8

RUN, DON'T WALK!

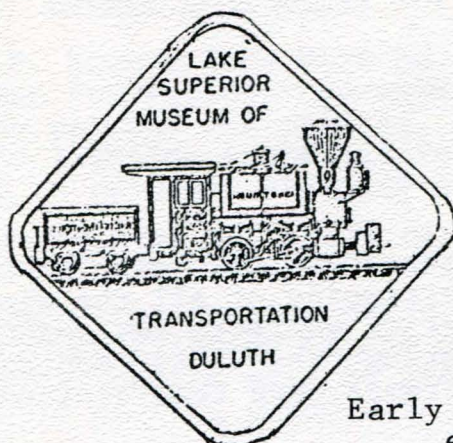
Yes, run to your nearest mailbox with the order form below and your check or money order because you won't want to miss this opportunity.

The Club is going to sell bronze and silver copies of the medallion pictured below. These will be available as a watch fob or a key ring. But, you, because you belong to the L.S.T.C., are being offered a chance to buy a limited, numbered, gold edition of this medallion at this time.

All the medallions will be made by Hoovers of Peru, Illinois. If we receive your order before October 15, 1978 a special one will be made for you in your choice of watch fob (with a leather strap) or a quality key ring (with room for about six keys). Serial numbers will be issued by when we receive your order. First orders get the lower numbers. All limited editions will include a registration card as proof of authenticity and your number will be kept in the Club records.

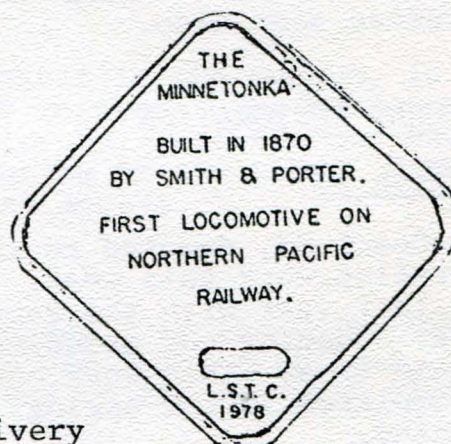
To keep these limited, only one will be available per Club member. However, we are also offering at the same price (if you order now) the regular bronze or silver copy. (These would make nice gifts.) The price will be 50¢ higher when they go on sale at the museum.

Remember, we must have your order by October 15th Minnesota and Duluth residents please remember to include the sales tax in the correct amount.



Face

Early Dec. delivery expected



Back

ORDER FORM

Quantity	Description	Price Each	Total
1	Gold limited edition (check one) fob _____ ring _____	\$2.50	\$2.50
	Bronze key ring	2.50	
	Bronze watch fob	2.50	
	Silver key ring	2.50	
	Silver watch fob	2.50	

Sub Total

* Tax

Total Amt.

* Minnesota tax - 4%
Duluth - 5%

SHORT LINE PARK

An old section tool house from Short Line Park in far western Duluth on the old Northern Pacific short line to Carlton was recently moved to the transportation museum property. A group of about twelve volunteers using track jacks and blocking loaded the building on a low-boy trailer provided by Dave Sackette for the move to the Depot. It will be used as a tool house or motor car shed.

WESTERN WATERFRONT TRAIL

There has been some recent progress on the Fond Du Lac railroad line with a state grant to the city of \$137,000 for developing the Western Waterfront Trail project (official name of the project which includes in addition to the rail line a bike trail and nature trails).

Participation of the Transportation Club in the railroad part of the project is being discussed. Of immediate concern is replacement of a burned out bridge on the line. This will probably be done with a culvert and fill. Brushing of the right of way should be started soon also.

EQUIPMENT RESTORATION

Coach 33

DM&IR Coach 33, donated to the museum in 1976, has seen considerable restoration work this year. Work by transportation club members began last year with the removal and stripping of all the window frames. Sanding and grinding the exterior surfaces was begun at the same time. This work continued through the winter months and was completed in the spring. Window frames were then stained and repainted.

With the date for the excursion train to Virginia approaching, a special effort was made to ready the car for use on the train. Jeff Skarman, a DM&IR car shop employee, donated his talents in lettering the car with a special 3M Co. product. Arrangements were then made to have the car painted by the DM&IR shops in Proctor.

Windows and doors were installed and the hardware applied. Seat backs and cushions, having been cleaned free of charge by Loyear Cleaning Service and stored, were placed in the car just in time for the train.

An open window car, the 33 was one of the most popular cars in the train and rode very well. Plans for this winter include stripping the interior surfaces and restoring the finished woodwork which had been painted over.

(Continued on Page 5)

EQUIPMENT RESTORATION (continued)N.P. Baggage - RPO

The library in the N.P. baggage - RPO car has been made more accessible with the construction of a stairway and new door. Books, records and other materials are being accessioned and cataloged for convenience in reference work. The exterior of the car is being prepared for painting.

SP&S Baggage Car

Hallet Dock Co. completed a sandblasting and paint job on the museum's SP&S Baggage Car No. 66. Additional painting is being completed along with installation of safety gates on the four doorways. Repair of the wiring and replacement of some of the electrical components has been completed also.

Lettering of the car and refinishing the interior has yet to be done. It will be equipped similar to BN Car No. 225 with a bar and coolers. Installation of an engine and 32-volt generator for trainline power is planned for one end of the car.

Rotary Snow Plow

N.P. Rotary Snow Plow No. 2, on exhibit in the museum, is now open for visitors to walk and climb through. The boiler lagging was patched and painted, the interior walls of the car body painted, and lighting installed for safe touring of the plow. Construction of an adjacent stairway permits easy access.

C&NW Lounge Car

Twenty-two parlor chairs were purchased from the Milwaukee Road for installation in the C&NW Lounge Car. The high back, reclining swivel chairs will be used in one end of the car with chair and table seating planned for the other end.

HELP NEEDED

While many of the exhibits in the Transportation Museum have been restored, a great deal more has yet to be done. This is not obvious since all the equipment inside the museum has a fresh coat of paint on the outside and looks fine to the visitors. Some of these still need interior restoration so that they may be opened to the public and of course there is the equipment shed outdoors that needs attention. All members and interested persons are invited to help in this work. Most volunteer work is done on Saturdays but Wednesday evenings are open also.

MODEL RAILROAD

Work continues Wednesday evenings on the model railroad at the Depot. The emphasis has been on scenery with completion of two dioramas near. Backdrop construction and painting and track maintenance are still needed. Those interested in this project are invited to join the regulars on Wednesday from 6:30 to 9:00 P.M.

Junior members are invited to join in the construction of the model railroad in the ex-DWP bunk car at the museum. Saturdays are workdays on the project. Contact Dave Bruns at 724-1909.

FLEA MARKET - MODEL RAILROAD SHOW

The 1978 Flea Market - Model Railroad Show will be held Sunday, November 5 in the Railroad Museum. Model railroad equipment, toy trains, books, magazines, memorabilia, or anything "railroad" may be offered for sale. Those with dioramas, collections, or operating displays just for exhibit are invited to participate also. Tables will be available for \$2 each for sales. No charge for exhibit tables. Regular Depot admission rates will be in effect. Contact Jim Stanley (715) 394-9295 for Dave Carlson (218) 722-5097.

MODULAR RAILROAD

Several members have expressed interest in participating in a modular model railroad layout in HO scale. This is a system where individuals build modules to specific dimensions regarding height, width, length, track placement, and wiring methods. Participants may practice their creative talents in scenery, artistic backdrops, and model building while still being able to run trains on a group effort at club meetings and at local or regional hobby and model railroad events.

This is ideally suited for people with little space such as apartment dwellers and those who frequently move. Several meetings are planned for those interested. Contact Jim Stanley (715) 394-9295.

COMPUTER

A recent meeting of model railroaders focused on the Depot model railroad. One area of interest was the possibility of using a mini-computer to control the model railroad during business hours at the museum. While it is impractical to have a full time attendant, the model railroad is an animated exhibit that is most interesting to visitors when in operation. A committee has been formed to study the project: Allen Anway, Bob Taylor, Dave Bruns, Jim Susans, and Jergen Fuhr.

CALENDAR OF EVENTS

Sept. 29 General meeting - 7:30 P.M. Multi-Media Room, The Depot
Oct. 6-8 Thousand Lakes Region, NMRA Fall 1978 Rally, Winona, Minn.
Oct. 27 General meeting - 7:30 P.M. Multi-Media Room, The Depot
Oct. 29 Twin City Model R.R. Club Flea Market, St. Paul, MN
Nov. 5 Flea Market - Model Railroad Show, Transportation Museum
Nov. 24 General Meeting - 7:30 P.M. Multi-Media Room, The Depot

NEXT MEETING

The next general membership meeting will be Friday, September 29, at 7:30 P.M. in the Multi-Media Room at the Depot. Tom Gannon and Dale Carlson will present a slide program on their summer trip to Colorado and the narrow gauge railroading still active there. The Durango to Silverton excursion and the Cumbres and Toltec Scenic Railroad will be featured. A business meeting will precede the program and refreshments will be served.

TLR 1978 FALL RALLY

The Thousand Lakes Region, National Model Railroad Association Fall 1978 Rally will be held October 6-7-8 in Winona, Minnesota at the Winona State University Campus.

Friday evening's program of movies and club model railroad operation will be at the Winona County Historical Museum with refreshments at their "Golden Dollar Saloon".

Saturday's schedule includes tours of railroad facilities, a car building contest, a ladies tour of the Winona Knitting Mills and shopping centers, clinics, movies, banquet, and an auction.

Sunday will have a business meeting followed by a brunch and slide shows.

For more information contact: Bill Meier, Rally Chairman
313 West King Street
Winona, Minnesota 55987

EXPANSION

The Duluth City Council has approved construction of a parking ramp to serve the St. Louis County Heritage and Arts Center (The Depot). The design of the ramp is such that it will provide additional covered track storage for the railroad museum. The east end of the 250 ft. ramp will be 85 feet west of the train shed. Much needed shelter for museum exhibits will be gained and eventual construction of walls will further protect exhibits. Construction is expected to begin this fall.

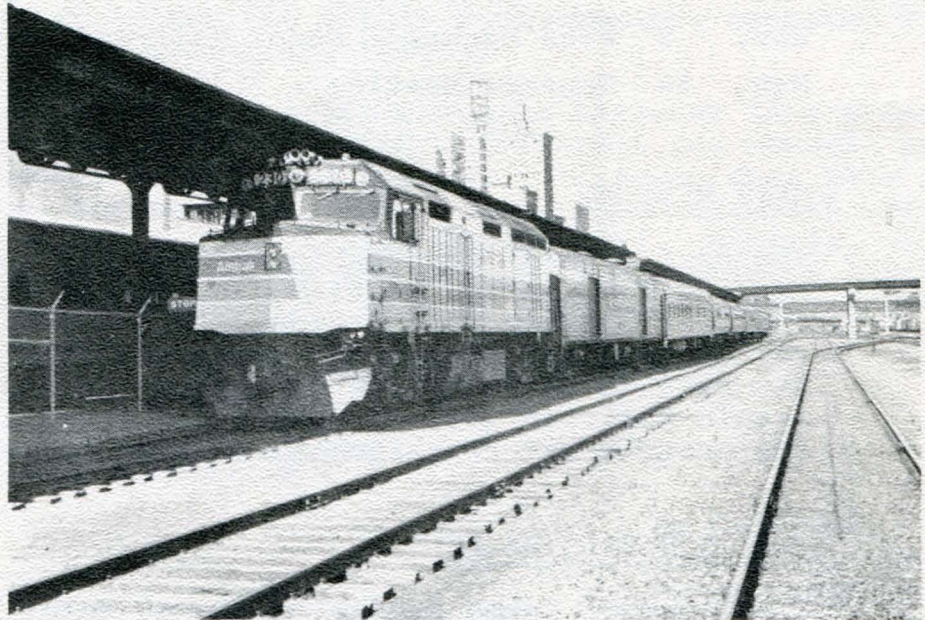
BIG THINGS HAPPEN TO AMTRAK (continued)

would be "muted" once again.

But then, all at once, things started to happen - new furniture for the depot, Am. fleet equipment, and a route expansion to Chicago with the addition of a sleeper.

One sad change was made in that John Stacey got bumped. Now John works somewhere in the Cities.

Our congratulations go out to John and his new wife. May they always be happy.

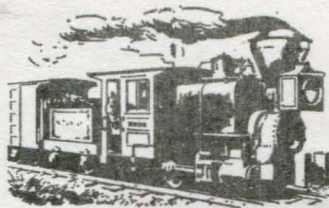


REWARD

A reward is being offered for the return of or information leading to the return of two (2) Soo Line steam locomotives. They are a 0-6-0 switcher #340 and a Pacific #2708. Any information should be left at the Railroad Museum desk.

From:

Lake Superior Transportation Club
The Depot
St. Louis Co. Heritage & Arts Center
506 West Michigan Street
Duluth, Minnesota 55802



LAKE SUPERIOR TRANSPORTATION CLUB

Lake Superior Museum of Transportation and Industry

506 WEST MICHIGAN STREET • DULUTH, MINNESOTA 55802

ANNUAL MEETING NOTICE

The Annual Meeting is scheduled to begin at 7:30 P.M. Friday, January 27, 1978 in the Multi-Media Room at The Depot. In addition to the usual reports an election of officers will be held. The Nominating Committee has recommended the following slate of officers for two year terms:

President	- David Carlson
Vice President, Public Relations	- Mark Olson
Secretary	- Dale Carlson
Director, Model Railroad	- Martin Carr
Editor	- John Schramek

Nominations from the floor will be accepted. A nominating committee for the coming year must be elected also.

A film program is planned and refreshments will be served. Anyone wishing to contribute to a slide program featuring activities and events of the club and museum is invited to do so.

* * * * * MEMBERSHIP DUES * * * * *

Membership dues for 1978 are due and payable by January 31, 1978. Please send your remittance with the statement form that has been mailed to you to:

Treasurer
Lake Superior Transportation Club
506 West Michigan Street
Duluth, Minnesota 55811

Your membership card will be mailed upon receipt of your dues.

* * * * * BUS TRIP * * * * *

A bus trip to the Midwest Model Railroad Show at the Northtown Shopping Center in Minneapolis is planned for Saturday, February 11, 1978. The \$8.00 per person fare includes round trip transportation only from Heritage Center (The Depot). A meal stop will be made at Hinkley on the return trip. The bus will leave Duluth at 8:00 AM, arrive Northtown 11:00 AM, leave Northtown 4:30 PM, arrive Duluth approximately 8:30 PM. An optional side trip to the Minnesota Transportation Museum shop in St. Paul is included. Contact Jergen Fuhr at (218)525-5202 or send a check or money order for reservations to the address above.