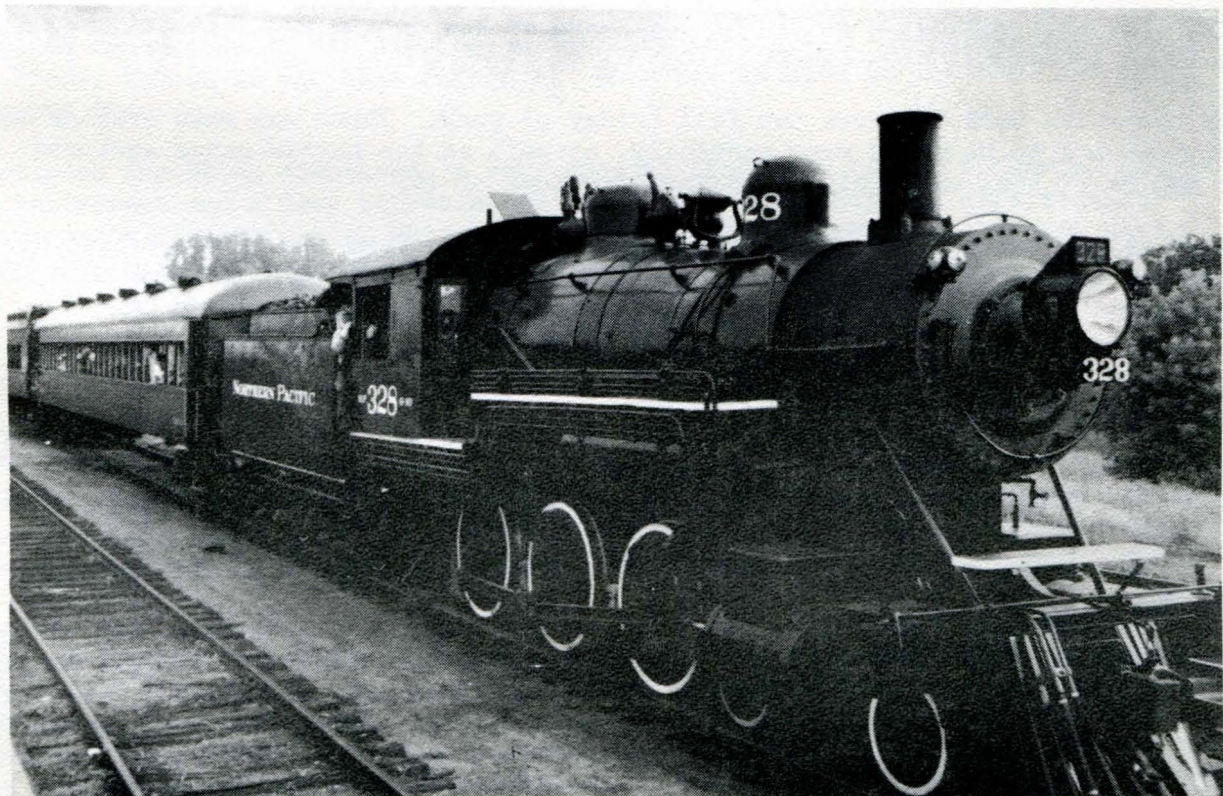
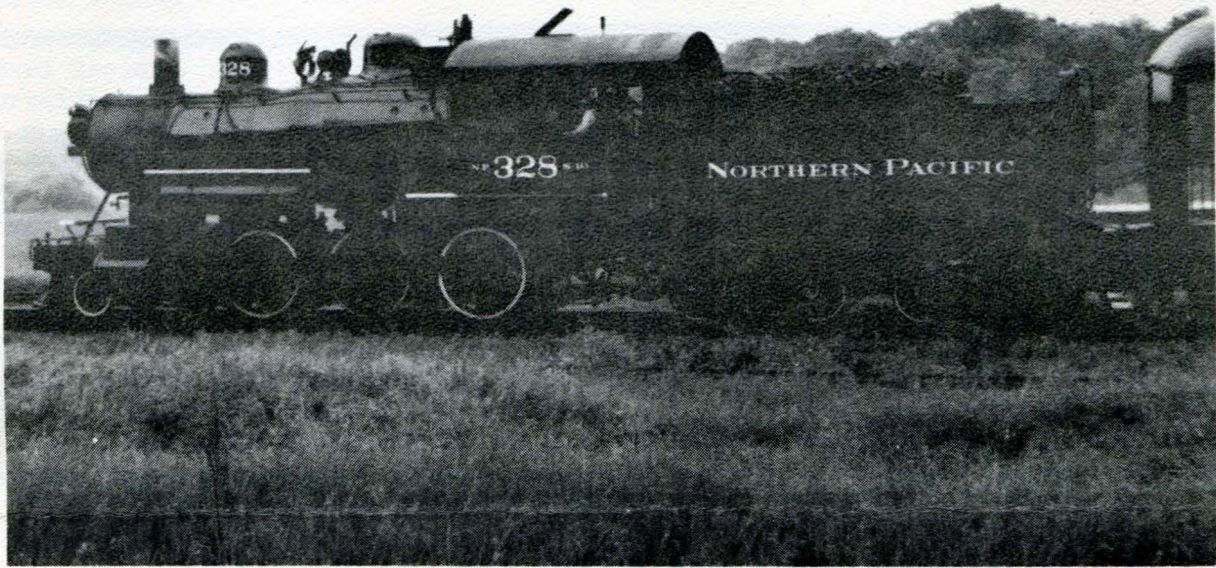


LAKE SUPERIOR  
TRANSPORTATION CLUB

*NEWSLETTER*

SUMMER 81



Photo's by Robert Mortinsen



## 1981 OFFICERS

President	Jergen Fuhr
Vice President, Administration	Mark Olson
Vice President, Public Relations	Allen Anway
Recording Secretary	Tim Schandel
Membership Secretary	Chuck Jensen
Treasurer	Bill Mickelsen
Director, Operations and Safety	Tom Gannon
Director, Equipment Restoration	Martin Carr
Director, Model Railroad	Wayne Olsen
Director, Exhibits and Display	Robert Mortinsen
Editor	

### STEAM IN MINNESOTA

Friday, July 3rd was the inaugural run of the Minnesota Transportation Museum's Northern Pacific 4-6-0 number 328.

The locomotive was completely rebuilt by the members and looked as though it had just come from the builder.

The train consisted of MTM's Rock Island comuter car 2604, Great Northern coach 1096, (recently purchased), LSTM's D.M.I.R. coach 33, Chicago Madison and Northern coach, open platform observation car Gritty Palace, and the MTM's Northern Pacific triple combine 1102.

Needless to say, the sight and smell of the ten-wheeler brought back many memories.

### AT THE DEPOT

Very early this spring, most of the equipment at the museum was switched around to its final location inside the building.

This operation took the crew two full Friday of work. There was much fragile equipment that had to be moved very carefully, as well as the narrow gauge equipment and the making of some make-shift couplings for some of it.

The BN helped out the first Friday by pulling 17 cars from the tracks behind the building, and setting them over in the bridge yard for the day. Without this help, the planned movement of the cars inside would probably still be going on.

### TROLLEY WIRE AND RAIL

The overhead trolley wire and the remainder of the narrow gauge rail has been laid inside the building on Track Seven. All that remains to be done is the bricking in of the track to go along with the old town theme.

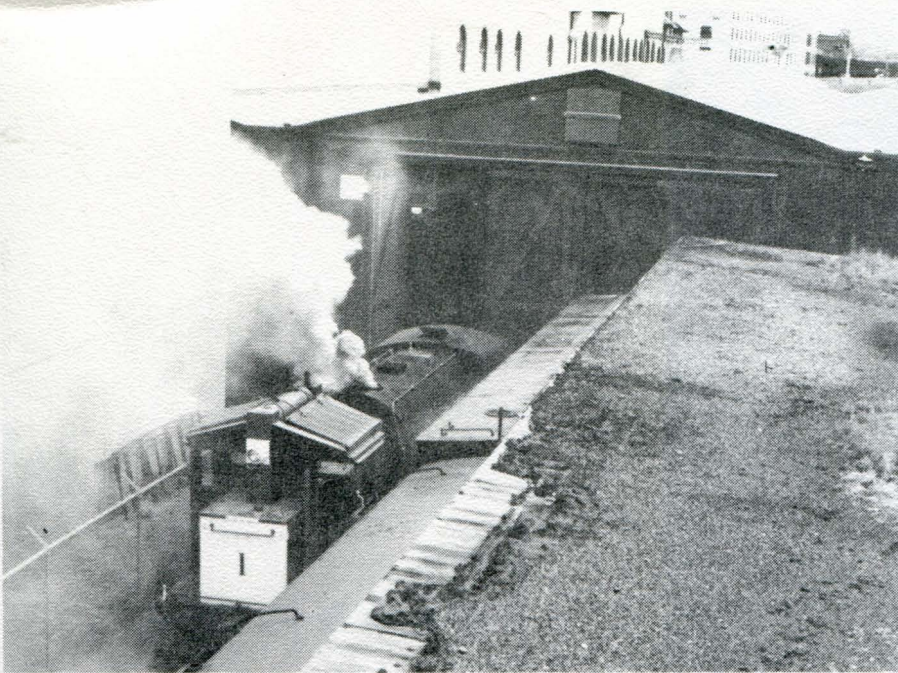
### LSTM DUES

For those of you who have not paid your 1981 dues, they are due at this time. This will be your last notice.

### LAKE SUPERIOR AND MISSISSIPPI RAILWAY

Thos people knowledgeable in car repair and maintenance are urged to contact Jergen Fuhr for further information.





SEVEN SPOT AT WORK

The Seven Spot was fired up on Sunday June 7 for switching operations at the museum.







Photo's By Mark Olson

MODEL RAILROAD SHOW  
AT  
MILLER HILL MALL  
MARCH 28 & 29



Photo by Robert Mortinsen



## A WORD FROM THE PRESIDENT

It was a tough fight, but after considerable deliberation, members and officers of the LSTC very reluctantly conceded to his wishes and allowed his resignation. It was with mixed emotion that those attending the May meeting said goodbye to President, Norman Livgard. Oh, he'll still be around, not as president.

Mixed emotion because knowing that Norm had been doing a fantastic job as president, devoting a lot of time and energy, having the right connections, and yet also doing the same for the LS & MRR. It was realized he is no superman and that he has only one life to give to his country, er, ah, railroad, so his resignation was accepted with regrets. We can now see only bigger and better things for the LS&M with Norm at the helm.

At the May meeting, the gavel was handed to the vice president-administration. The officers decided to wait until the annual meeting to fill the post of president or vice president. Norm's first term would have expired at the annual meeting.

A sincere thank you to all club members, hogheads, brakemen, conductors, etc., who helped with June 13 and 14 excursion train. Attendance was fair considering the weather--600 plus passengers. While Duluth was having a very wet one, my family and I were in the Big Horn and Bear Tooth Mountains of Montana and Wyoming, having snow at the higher elevations. But it was nice on the 15th for a ride on the Black Hills Central.

This last spring, the Lake Superior and Mississippi Railroad was re-incorporated as a non-profit excursion railroad. A diversification, an off-shoot, call it what you will, many of us have gotten involved because of our affiliation with the museum. But in the future as things are completed at the museum, more and more of our involvement will be with the LS&M. There is still a lot of track work to be done and help is needed to tighten rail joints, replace ties, broken rail joiners, holes to be drilled. And Norm has our tamper working but we need a place to keep it; a building or a steel boxcar, along with other equipment.

About a dozen members have been showing up Saturday mornings at Riverside where we keep our tools, but it is the same regulars. It would be nice to see some new faces and share the fun.

While accolades are being dispensed, a very special thank you to two wonderful people on their retirement and a deep appreciation for their leadership and direction for the Lake Superior Transportation Museum. Don Shank and Tom Lamphier, may you have many years of a healthy and happy retirement. May God bless you both.

Jergen Fuhr, President  
(Former vice president)

## MODEL RAILROAD

The LSTM model railroad will feature operation nights starting in September. Operation will take place 7:00 P.M. the first Wednesday of each month. In addition, reduced operation will be allowed on a given loop of track on other Wednesday nights.

Operation has been curtailed previously due to the difficulty of shifting back and forth between computer operation and manual operation. This summer, Allen Anway and Martin Carr will prepare a system to facilitate this change over. In order that the museum be served by the computer, it is necessary to have manual operation only at the above specified times. The model railroad was automated at the board of directors request for museum display operation.

We urge all members interested in operation to attend the first session Wednesday, September 9th. (Well, usually the first Wednesday of the month.)



# CALENDAR OF EVENTS

---

August 8 & 9	Excursions at Riverside/New Duluth
September 19 & 20	Excursions at Riverside/New Duluth
September 25	General meeting, 7:30 P.M. Multi-Media Room
September 26 & 27	Excursions at Riverside/New Duluth (with car club)
October 23	General meeting, 7:30 P.M. Multi-Media Room
November 27	General meeting, 7:30 P.M. Multi-Media Room

LAKE SUPERIOR TRANSPORTATION CLUB  
ST. LOUIS COUNTY HERITAGE & ARTS CENTER  
506 W. MICHIGAN STREET  
DULUTH, MINNESOTA 55802

NON-PROFIT ORG.  
U.S. POSTAGE  
**PAID**  
DULUTH, MINN.  
Permit No. 228

MARK OLSON  
707 4TH ST  
PROCTOR

-RRLB03020

MN 55810