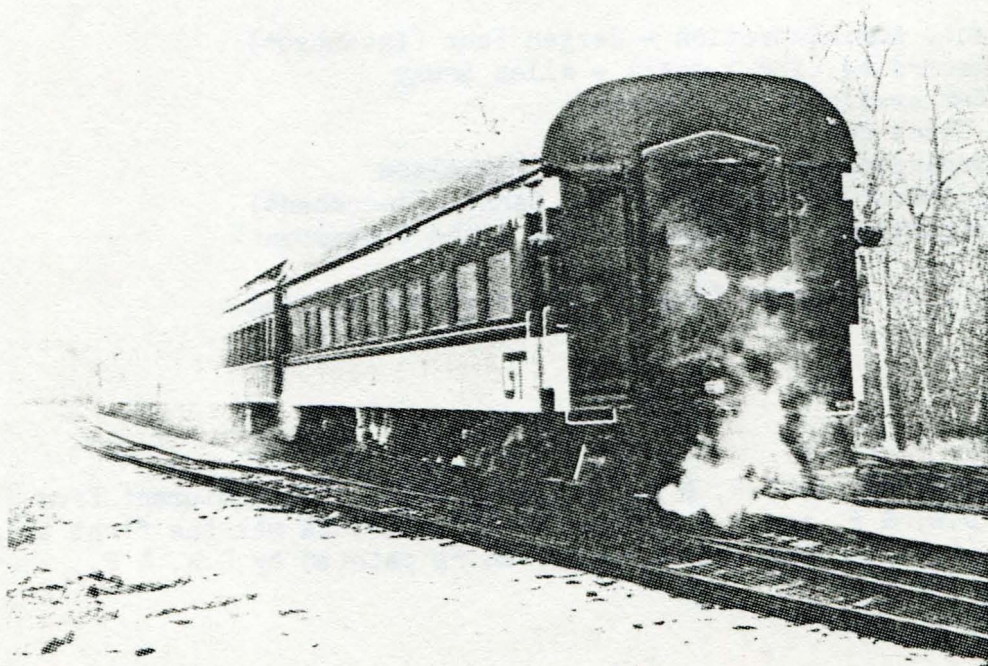


LAKE SUPERIOR  
TRANSPORTATION CLUB *NEWSLETTER*



Both photos by Dan Mackey

**LAKE SUPERIOR TRANSPORTATION CLUB**  
**1980 OFFICERS**

President. . . . .	Norman Livgard
Vice President, Administration . . . . .	Jergen Fuhr
Vice President, Public Relations . . . . .	Mark Olson
Secretary. . . . .	Dale Carlson
Treasurer. . . . .	Robert Cibuzar
Director, Operations and Safety. . . . .	James Goulding
Director, Equipment Restoration. . . . .	Thomas Gannon
Director, Model Railroad . . . . .	Martin Carr
Director, Exhibits and Displays. . . . .	Wayne Olsen
Editor . . . . .	Robert Mortinsen

**NEXT GENERAL MEETING**

January 30, 1981, 7:30 P.M. in the Multi-Media Room. Election of officers and annual meeting. Entertainment to be an open night. Bring your favorite slides and movies. We'll show as many as we can. Refreshments to be served. (Remember your 1981 dues).

The Nominating Committee has prepared the following slate of candidates for office for two year terms:

Vice President, Administration - Jergen Fuhr (incumbent)  
Secretary, Recording (for 1 year) - Allen Anway  
Secretary, Membership - Tim Schandel  
Treasurer - Chuck Jensen  
Director, Operations and Safety - Bill Mickelson  
Director, Equipment Restoration - Tom Gannon (incumbent)  
Director, Exhibits and Displays - Wayne Olsen (incumbent)

More nominations will be accepted from the floor at the meeting.

COVER:

A coming and going shot of the D.W. & P. Christmas train with equipment from B.N., D.M. & I.R., D.W. & P. and our museum. Note that this was the first trip for the G.T. Coach (Santa's Throne Room) after being painted by D.W. & P.

## G.T. COACH 5327

The Grand Trunk coach has arrived at the museum in its former colors (black and off-white). The management of the D.W. & P. and the crew at Virginia deserves a lot of praise for the excellent paint job done on her..

On December 13 the coach was used by the D.W.P. for their annual Christmas special. Prior to this it was sent over to the B.N. Superior, where steam was applied to check out the heating system before the trip. (We learned that the heating system could not be checked out with the application of air on the steam line due to the type of valves in the system. As it turns out, the system is okay.)

Seats are now being installed.

## SEMAPHORES

This past fall, Norm Livgard, Mark Olson, Dale Carlson, Lee Russell, Bob Mortinsen and Dave Sackette were out on the old Short Line Park right-of-way with the purpose of removing semaphores and any other signal gear on the line.

The chosen time for our escapade was opening day of deer season. Needless to say, we all wore highway orange caps and vests.

What a sight we were! If you can imagine six men jumping out of a bright yellow truck with tools in hand, dressed in orange, dropping each semaphore, then racing on to the next one.

The majority of the semaphores were pretty well stripped of their relays and motors. Fortunately, there were two that were complete except for one cracked lense.

We hope to use a few of these on the West Duluth line in the future.

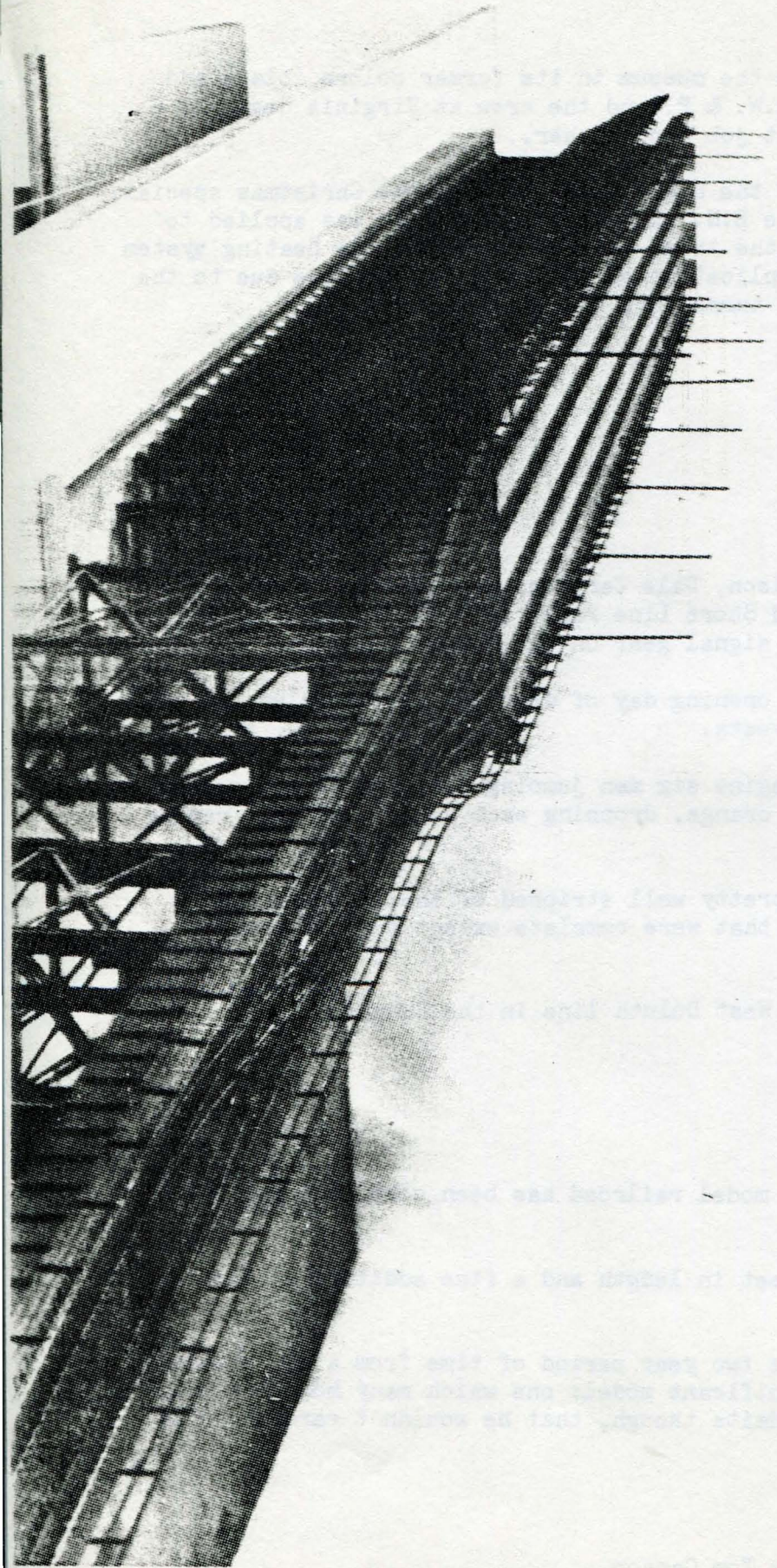
## MODEL RAILROAD DOCK APPROACH

The approach to the ore dock for the model railroad has been completed and is now in place.

The complete structure is over six feet in length and a fine addition to the model railroad.

Tom Gannon built the structure over a two year period of time from a set of plans by the Missabe. This is truly a magnificent model: one which many modelers would like to have on their layout. Tom admits though, that he wouldn't care to build another one for a while.

The two photos of the ore dock are by Tom Gannon.



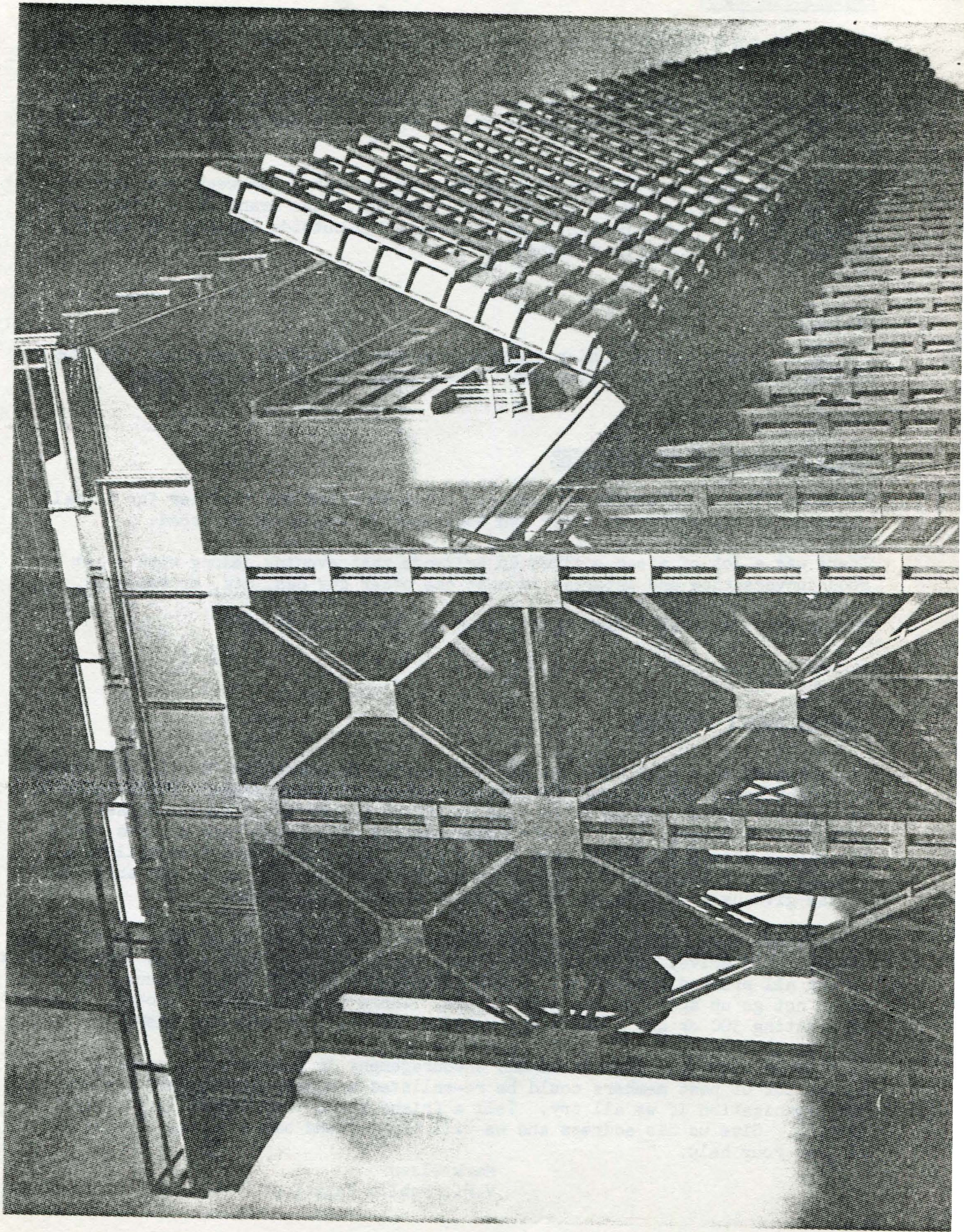
The photograph shows the hull of the ship under construction. The hull is dark and curved, and is supported by a complex network of metal scaffolding and beams. The background is light and somewhat hazy, suggesting an outdoor industrial setting.

The photograph shows the hull of the ship under construction. The hull is dark and curved, and is supported by a complex network of metal scaffolding and beams. The background is light and somewhat hazy, suggesting an outdoor industrial setting.

The photograph shows the hull of the ship under construction. The hull is dark and curved, and is supported by a complex network of metal scaffolding and beams. The background is light and somewhat hazy, suggesting an outdoor industrial setting.

The photograph shows the hull of the ship under construction. The hull is dark and curved, and is supported by a complex network of metal scaffolding and beams. The background is light and somewhat hazy, suggesting an outdoor industrial setting.

The photograph shows the hull of the ship under construction. The hull is dark and curved, and is supported by a complex network of metal scaffolding and beams. The background is light and somewhat hazy, suggesting an outdoor industrial setting.



## RESTORATION NEWS

Tom Cannon reports that the Q. & T.L. (Quincy and Torch Lake) narrow gauge ore car has been completed.

Ex-D.M. & I.R. speeder #502 has been stripped down and will be turned into a trailer. The motor and other parts will become spare parts and will be used as needed.

S.P. & S. baggage car #66 had been spotted inside for a few weeks for further work on the interior, (painting and scraping) while the Grand Trunk coach was out being painted. At the present time it is sitting outside waiting for warmer weather so the job can be finished.

## NOTICE

A note of thanks to the junior members from the Mechanical Department for their help with the 44-tonner engine work. Both motors are now in good shape.

## MODEL RAILROADERS GET-TOGETHER

December 17th was the evening that the local modelers got together for a small party and a chance to run their own equipment on the model railroad.

There was a lot of steam engines in evidence that evening, along with a lot of good conversation and interest in what the other guy has, did, or reworked, etc.

Next year's party will last even longer and be even more fun!

## IMPORTANT NOTICE

It is regrettable that the dues for 1981 had to be increased for all our members. We on the board felt it was a necessary action and those present at the meeting in November backed our decision. In an effort to prevent future increases, effective this newsletter, we are experimenting with Xerox reproduction versus the offset printing we have used in the past. Our next newsletter will be a combination of both methods with printing for pictures and xerox for articles. Please give us your opinion, be it for or against this style.

Along these same lines, it has been discussed, and I feel we should act on having a membership drive. If we could increase our members by just 25% we could go back to our all printed newsletter. A 50% increase in members would assure that dues would not go up again in the near future. There is strength in numbers. The cost of printing 300 or 400 newsletters reduces the cost per copy considerably.

So I would seek your assistance and encouragement in a membership campaign. I feel a lot of past members could be re-enlisted and many new members brought into our organization if we all try. Tell a friend about the club or invite him to a meeting. Give us his address and we will try to send him a sample newsletter. We need your help.

Mark Olson  
V.P., Public Relations

### A.I.M.E. TRIP

Saturday, September 20, 1980 was the day for the mining engineer's annual trip sponsored by the Burlington Northern and Duluth Missabe & Iron Range Railway Company. The club was also invited on the trip for a nominal fee, so we took along DMIR coach 33, SP&S baggage 66, and the 1097. The Lake of the Isles also went but was used by the A.I.M.E.

The trip lasted around two hours and focused on the Twin Ports transshipment and bulk handling facilities and major docks of Duluth and Superior.

We were treated to a view of the harbor from the DMIR ore docks, Proctor hill, Proctor yard, Steelton Saunders, BN, Allouez yard, B.N. ore docks, Superior yards, Rices Point yard and all the nearby facilities.

This was a very nice trip around the region riding on some trackage which hasn't seen a passenger train.

### TROLLEY CABLE AND TRACKAGE

If you happen to wander out behind the museum these days you will notice that the overhead cable and supporting poles are up for the trolley line. These were strung by Minnesota Power this fall.

By spring or so we should see some operation of our trolleys on track seven.

Along with the cable, you will also notice the third rail and crossover onto track five has been completed. The appearance of this third rail trackage reminds some of the club members of Colorado's famous narrow gauge trackage.

### O GAUGE LAYOUT

A 12' x 12' collapsible layout was constructed and put on display in the Great Hall during the Christmas holiday season. Bob Cibuzar, Norm Livgard, Tom Gannon, Dale Carlson, Dave Carlson, John Vincent, Marty Carr, and Dave Schauer were responsible for most of the work. The layout was a huge success and the museum received donations of equipment to operate on it. We hope to refine the layout to compare with store layouts of the 1950's for the next Christmas season.

### 1920 FORD DONATED

William O'Brien, a local attorney, has given the museum a 1920 Model "T" touring car for display. This car was restored by him and makes a fine addition to the museum.

# CALENDAR OF EVENTS

---

## CALENDAR OF EVENTS - 1981

January 30	Annual meeting, 7:30 P.M., Multi-Media Room
February 27	General meeting, 7:30 P.M., Multi-Media Room
March 27	General meeting, 7:30 P.M., Multi-Media Room
March 28 & 29	Model Railroad Show, Miller Hill Mall
April 24	General meeting, 7:30 P.M., Multi-Media Room
Spring-Fall	Work on Riverside line and Excursions. Dates to be announced.
May 22	General meeting, 7:30 P.M., Multi-Media Room
June 19	General Meeting, 7:30 P.M., Multi-Media Room
September 25	General meeting, 7:30 P.M., Multi-Media Room
October 23	General meeting, 7:30 P.M., Multi-Media Room
November 27	General meeting, 7:30 P.M., Multi-Media Room

---

LAKE SUPERIOR TRANSPORTATION CLUB  
ST. LOUIS COUNTY HERITAGE & ARTS CENTER  
506 W. MICHIGAN STREET  
DULUTH, MINNESOTA 55802

NON-PROFIT ORG.  
U.S. POSTAGE  
**PAID**  
DULUTH, MINN.  
Permit No. 228